



RFV 2000



technical specifications

Equipment Weights & Dimensions

Structure Weight	7,500 kg
Operating Weight	10,500 kg
Unit Length	3,200 mm
Unit Width	2,384 mm
Unit Height	3,357 mm
Footprint Area	7.63 m ²
Deck Loading	1,376 kg/m ²

Operating Flow Capacity

Maximum Flow Rate 2 x 10.5 m³/h

Pressure & Temperatures

Design Pressure 100 psi
 Design Temperature 0°C - 50°C

Vessels

Filter Vessel Size 24"
 Canister Size 7" x 20"
 Canister Quantity per Vessel 18
 Sock Quantity per Vessel 3

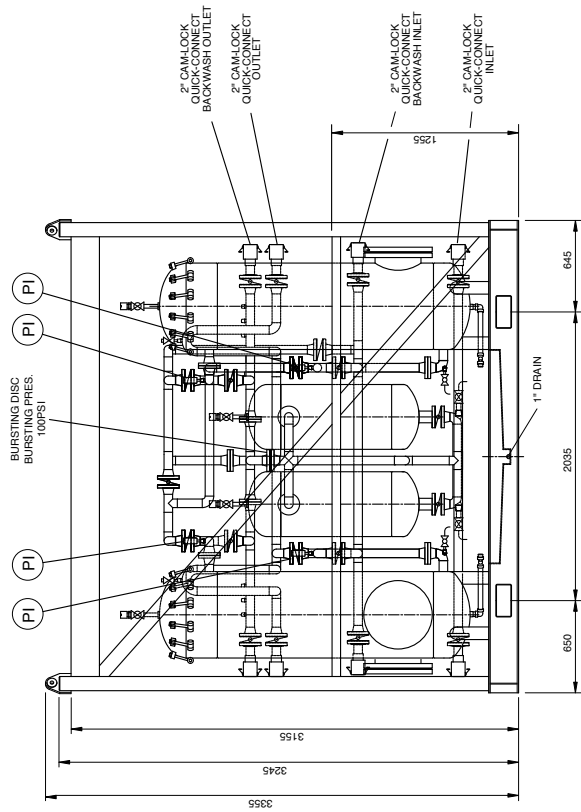
WATER TREATMENT



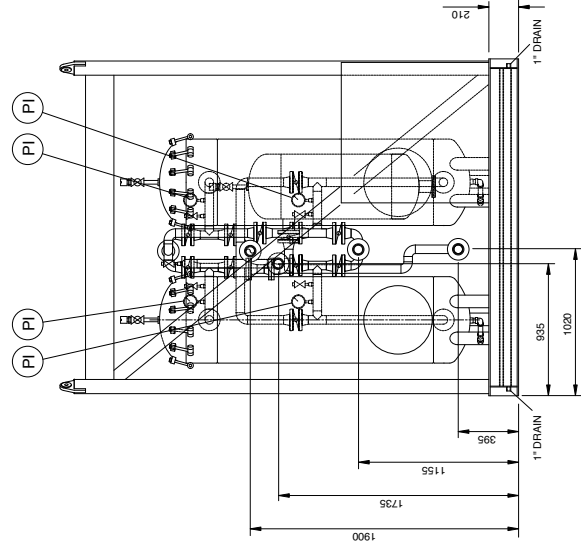
CETCO
OILFIELD
SERVICES
COMPANY

UK +44(0)1224 787340
 Malaysia +603 216 206 95
 Middle East +968 245 80219
 Africa +44(0)791 783 8316
 Australia +61(0) 893 160122

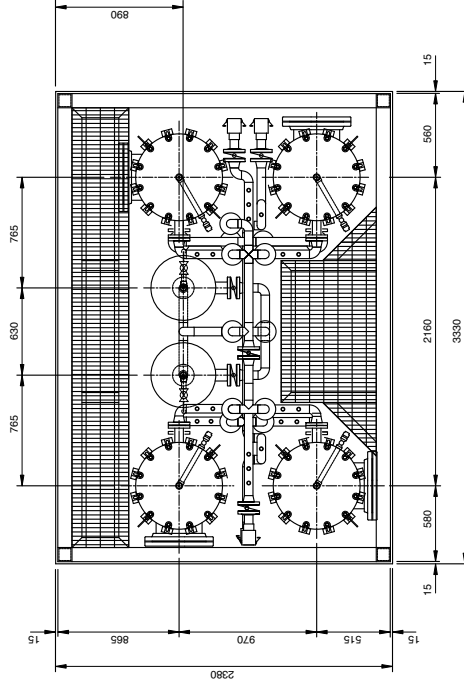
www.cetcooilfieldservices.com



ELEVATION ON SKID



END VIEW ON SKID



PLAN ON SKID

TAG NUMBER	SERVICE	18" SOCK FILTER x 2	TAG NUMBER	SERVICE	2000-11, 1b 1-4 24" FILTER VESSEL x 4
FLOW	m3/h		FLOW	m3/h	
I.D. x T.T.	mm		I.D. x T.T.	mm	
DESIGN PRESSURE	PSI	100	DESIGN PRESSURE	PSI	100
DESIGN TEMPERATURE	°C	0 TO 50	DESIGN TEMPERATURE	°C	0 TO 50
INSULATION	N/A		INSULATION	N/A	
FIRE PROTECTION	NONE		FIRE PROTECTION	NONE	
NUMBER OF ELEMENTS	4 x 3		NUMBER OF ELEMENTS	4 x 3	
SIZE OF ELEMENTS	7" x 20"		SIZE OF ELEMENTS	7" x 20"	

VESSEL CODE = PD 5500 CAT 3
 VESSEL DESIGN PRESSURE = 100PSI
 VESSEL DESIGN TEMP. = 0 TO 50°C
 SKID CODE = DNV CN 2.7.1

TARE WEIGHT = 3000 Kgs
 PAYLOAD = 7500 Kgs
 TOTAL GROSS WEIGHT = 10500 Kgs

CETCO SERIAL No:
3295-01

SKID MAWP:
100PSI @ 50°C

cetcooilfieldservices.com

This document is property of Colloid Environmental Technologies Company (CETCO) and contains confidential information belonging to CETCO. It is not to be reproduced, copied, disclosed, or used in any matter without the prior written consent of CETCO.

NO.	DATE	REVISIONS	BY	CHK	APPR	NO.	DATE	REVISIONS	BY	CHK	APPR

PROJECT NO.: 3295-01
 DRAWN: C.L.
 DATE: 20/03/2018
 CHECKED: []
 APPROVED: []
 ISSUED FOR APPROVAL: []

GENERAL ARRANGEMENT
 RRV 2000 # 1

SCALE: 1:50
 FILE NAME: RRV-0000-3295-01

